

**KEYNOTES:**  
\*All keynotes may not apply.  
(X-X) KEYNOTE TYPE

**ACCESSORIES**

A-1 EXTERIOR IMPACT RESISTANT STOREFRONT, SEE SCHEDULE  
A-2 EXTERIOR IMPACT RESISTANT WINDOW, SEE SCHEDULE  
A-3 EXTERIOR IMPACT RESISTANT STOREFRONT W/DOUBLE DOOR, SEE SCHEDULE  
A-4 EXTERIOR IMPACT DOOR, SEE SCHEDULE  
A-5 EXTERIOR PRE MANUFACTURE ALUMINUM WALL CLADDING, SUBMIT SHOP DRAWINGS  
A-6 EXTERIOR DECORATIVE SPANDREL WINDOW  
A-7 HEAVY DUTY WINDER WAVE BIKE RACK (18 LOOPS 20 BIKES) INGROUND MOUNT POWER COATED W/GROUT COVER  
A-8 BUILT-IN MILLWORK DISPLAY CASE BY OTHERS, SUBMIT SHOP DRAWINGS  
A-9 NEW 36" HIGH ANODIZED CLASS-1 ALUMINUM CONTINUOUS HANDRAIL (DETAILS AND CONNECTIONS PER MANUFACTURE), SEE DTLS AT SHEET A6.0  
A-10 NEW 36" HIGH ANODIZED CLASS-1 ALUMINUM CONTINUOUS HANDRAIL WITH 42" HIGH GUARDRAIL, SEE ARCH DTLS (DETAILS AND CONNECTIONS PER MANUF.) SEE DTLS AT SHEET A6.0  
A-11 NEW HI-LOW REFRIGERATED ADA DRINKING FOUNTAIN WITH BOTTLE FILLING STATION BY ELKAY OR SIMILAR  
A-12 LINE OF DROPPED CEILING ABOVE, SEE RCP PLANS  
A-13 LINE INDICATES HEADER ABOVE, SEE RCP PLANS  
A-14 LINE OF ROOF ABOVE  
A-15 34" MAX. HEIGHT VANITY ENGINEERING STONE TOP WITH UNDERMOUNT STAINLESS STEEL SINK BUILT-IN MILLWORK BELOW, SEE I.D. PLANS FOR FINISHES.  
A-16 NEW MIRROR TO BE AT 40" MAX TO THE BOTTOM OF REFLECTIVE AREA, PROVIDE BACKING AS NECESSARY, SEE I.D. PLANS FOR FINISH AND SELECTIONS.  
A-17 TYPICAL ACCESSIBLE GRAB BARS COMPLYING WITH ADA FBC 2020. (WALL MOUNT GRAB BARS SEE DETAIL A6.0)  
A-18 SCHLUTER-SCHENE TILE TRANSITION STRIP OR SIM.  
A-19 6" HG WOOD BASE, SEE DETAIL  
A-20 NEW STUCCO SILL BAND, SEE DETAIL 7-A6.0  
A-21 VENDING MACHINE

**WALL FINISHES**

W-1 NEW 8" CONCRETE BLOCK WALL WITH (2 COATS) CEMENTITIOUS FINISH (STUCCO). SEE WALL SCHEDULE FOR INTERIOR FINISHES.  
W-2 STEEL RIGID FRAME STRUCTURE, SEE STRUCTURAL PLANS  
W-3 STEEL COLUMN, SEE STRUCTURAL PLANS  
W-4 EXTERIOR METAL PANEL WITH SINGLE LAYER OF UNFACED INSULATION SECURED IN BETWEEN INTERIOR FRAMING AND ENERGY SAVER FABRIC. FABRIC INSTALLED AT INTERIOR SIDE OVER THE TOP OF FRAMING. STEEL SANDS ARE INSTALLED TO PROVIDED ADDITIONAL SUPPORT, SUBMIT SHOP DWGS.  
W-5 INTERIOR PARTITION WITH ACOUSTICAL INSULATION WHERE IS NOTED, NON LOAD BEARING METAL STUD INTERIOR FRAMING WITH 5/8" DRYWALL  
W-6 NEW EXTERIOR METAL COLUMN  
W-7 5/8" G.W.B. ON 1 5/8" 18 GA MTL FURRING AT 16" O.C. WITH R-4.1 REFLECTED FOIL INSULATION  
W-8 PROVIDED 48" HEIGHT TILE FINISH ON 5/8" DUROCK TILE BAKER BOARD THEN GREEN BOARD ABOVE WITH LATEX FINISH PAINT ON GALV. STEEL STUD (25 GA)

**CEILING**

CLG-1 EXPOSED STRUCTURE ABOVE TO BE PAINTED WHITE COLOR  
CLG-2 2x2 ACOUSTICAL SUSPENDED CEILING TILE  
CLG-3 1 LAYER OF 5/8" FINISH GYP BOARD ATTACHED TO STUD OR JOIST MEMBER AS REQUIRED, SEE SCHEDULE  
CLG-4 1 LAYER OF 5/8" FINISH MOISTURE GYP BOARD ATTACHED TO STUD OR JOIST MEMBER AS REQUIRED.  
CLG-5 TENNIS COURT LIGHTING (SEE RCP A2.11 FOR DETAILS)  
CLG-6 ENERGY SAVER INSULATION SYSTEM

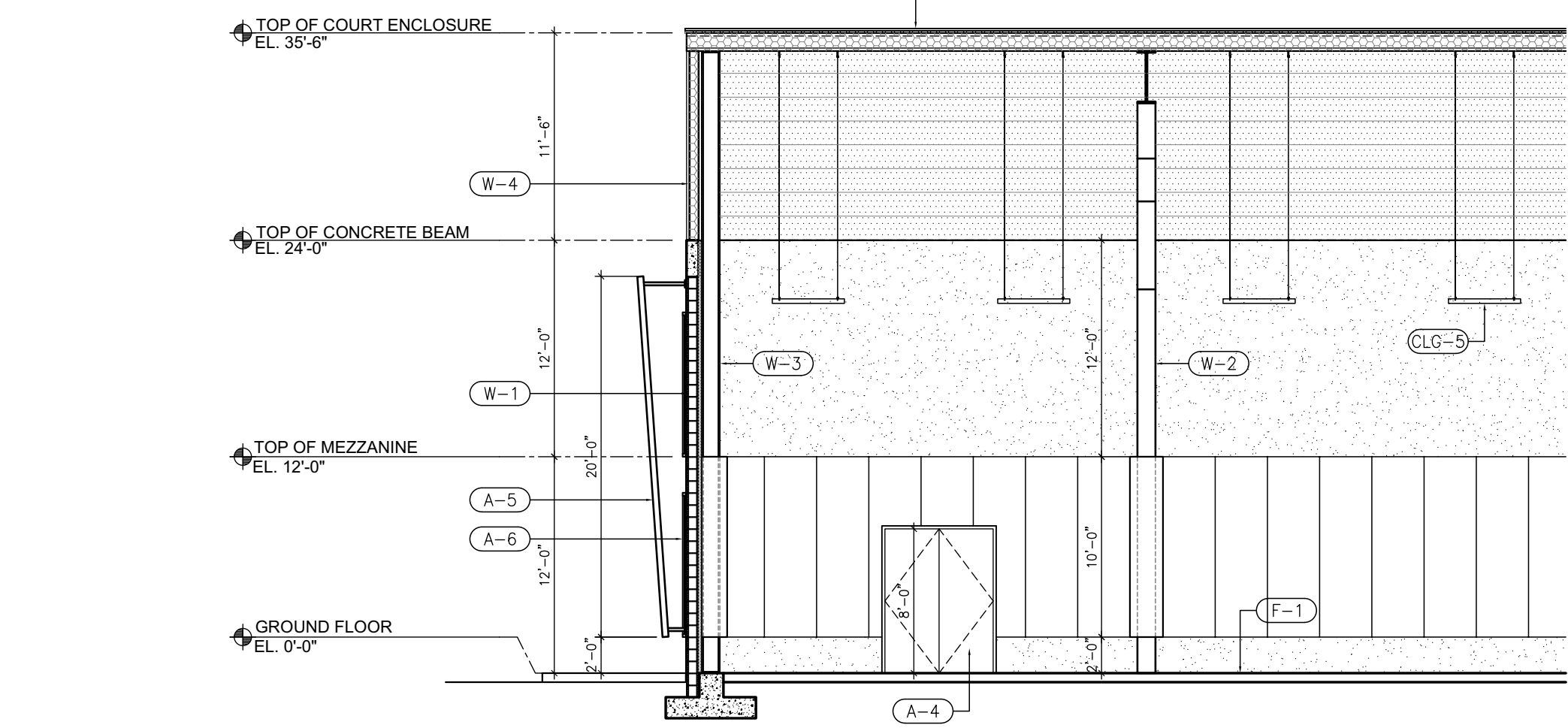
**FOUNDATION / FLOOR SYSTEM**

F-1 CONCRETE HARD COURT SURFACE COVERED WITH ACRYLIC RESINS TO SEAL THE SURFACE AND MARK PLAYING LINES  
F-2 NEW 5" CONCRETE SLAB ON 6 MIL. VAPOR BARRIER - LAP SEAMS 12" AND TAPE - ON COMPACTED - TERMITES TREATED FILL SEE STRUCT. FOR SLAB THICKNESS AND STEEL PLACEMENT  
F-3 NEW CONCRETE SIDEWALK POURED-IN PLACE WITH SLOPE  
F-4 AERIAL PRECAST CONCRETE FLOOR SYSTEM, SEE STRUCTURAL  
F-5 CONCRETE LANDING ON GALVANIZED METAL DECK, STEEL SHOP DWG'S TO BE PROVIDE FOR REVIEW AND APPROVAL  
F-6 STEEL PAN AND STEEL RISER WITH CONCRETE TREADS 1" OVERHANG TYP. STEEL SHOP DWG'S TO BE PROVIDE FOR REVIEW AND APPROVAL

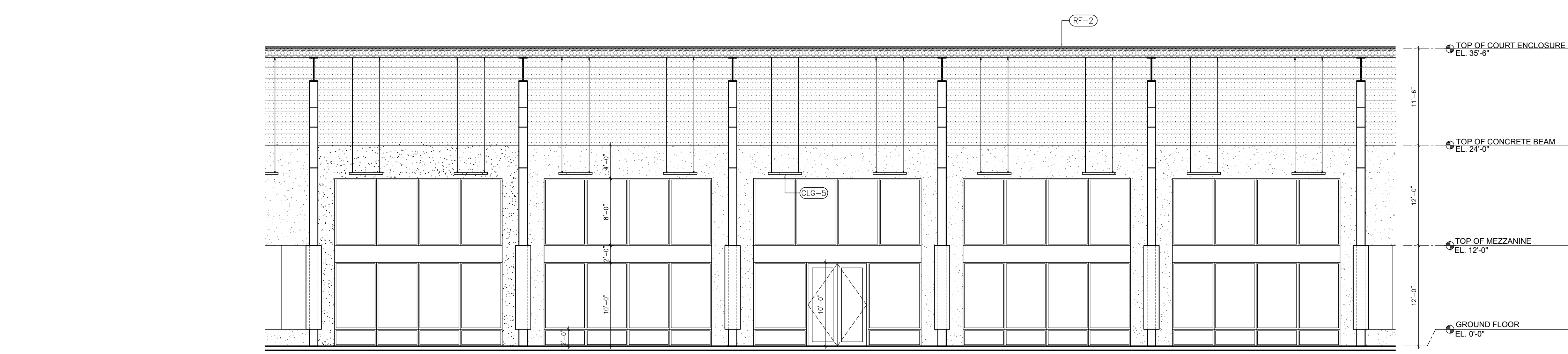
**ROOF**

RF-1 TPO ROOFING SYSTEM ON ISO INSULATION ON METL DECK AND METAL JOISTS, SUBMIT SHOP DRAWINGS.  
RF-2 WHITE STANDING SEAM METAL ROOFING PANEL OVER STEEL RIGID FRAME STRUCTURE WITH UNFACED INSULATION BLANKETS OVER ENERGY SAVER FABRIC INSTALLED WITH A NETWORK OF STEEL BANDING, SUBMIT SHOP DWGS  
RF-3 ROOF DRAIN, SEE MEP DWGS  
RF-4 ROOF OVERFLOW SCUPPER, SEE MEP DWGS  
RF-5 RAIN WATER LEADER, SEE MEP DWGS FOR SIZE AND CONNECTIONS  
RF-6 ALUMINUM GUTTER  
RF-7 ALUMINUM DOWNSPOUT  
RF-8 24"x30" GALVANIZED ROOF ACCESS HATCH TO COMPLY FBC 1015.7

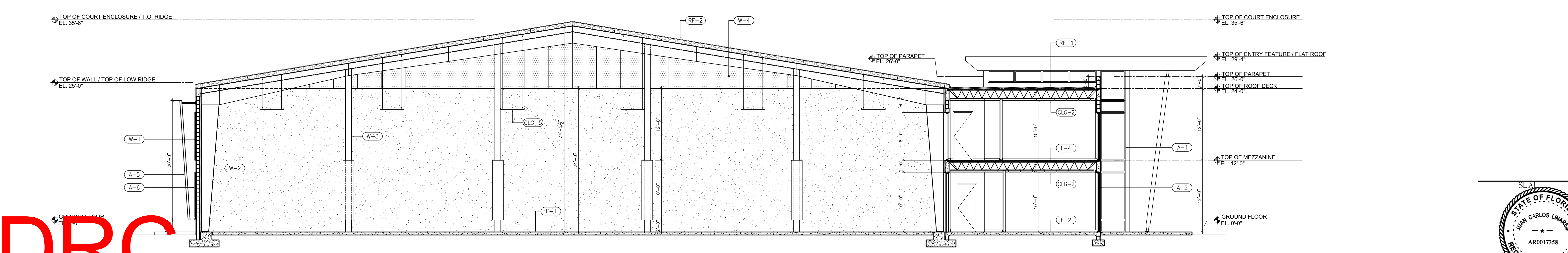
**MECHANICAL / ELECTRICAL / PLUMBING**



**BUILDING SECTION**  
SCALE: 1/8"=1'-0"



**BUILDING SECTION**  
SCALE: 1/8"=1'-0"



**BUILDING SECTION**  
SCALE: 1/8"=1'-0"

REVISIONS	
1.	
2.	
3.	
4.	
5.	
6.	
7.	
8.	
9.	
10.	

ALL IDEAS, DESIGNS, ARRANGEMENTS, AND PLANS INDICATED OR REPRESENTED BY THIS DRAWING ARE OWNED BY AND PROPERTY OF THE ARCHITECT, AND WHERE CREATED, ENVELOPED, AND DEVELOPED FOR USE ON, AND IN CONNECTION WITH THE SPECIFIED PROJECT, NONE OF SUCH IDEAS, DESIGNS, ARRANGEMENTS, AND PLANS SHALL BE USED BY, OR DISCLOSED TO ANY PERSON, FIRM, OR CORPORATION FOR ANY PURPOSE WITHOUT WRITTEN PERMISSION OF JWB LINARES ARCHITECTURE, INC.

**FLORIDA INDOOR TENNIS**  
POMPANO BEACH, FL 33069

3000 NORTH MILITARY TRAIL, SUITE 209  
BOCA RATON, FLORIDA 33431  
PHONE 561-391-0081 FAX 561-391-0085  
EMAIL mail@rwb-arch.com

**RWB**  
*Linares*  
ARCHITECTURE

PROJECT # 21-035  
DATE PER ISSUANCE  
SHEET #

**A4.00**  
JUAN C. LINARES  
Digitally signed  
by Juan C  
Linares  
Date: 2023.12.05  
08:43:13 -05'00'  
A426000640

**DRC**  
PZ23-12000009  
01/17/2024